

# **SAM CHANG FOUNDRY CO., LTD.**

## **INTRODUCTION**

Corporate Management & Planning Team  
22<sup>nd</sup> June 2016

# TABLE OF CONTENTS

**1 COMPANY LOCATION / HISTORY**

**2 BUSINESS PORTFOLIO**

**3 ORGANIZATION STRUCTURE**

**4 COMPANY STATUS**

**5 FACILITIES & EQUIPMENT**

**6 R&D CENTER**

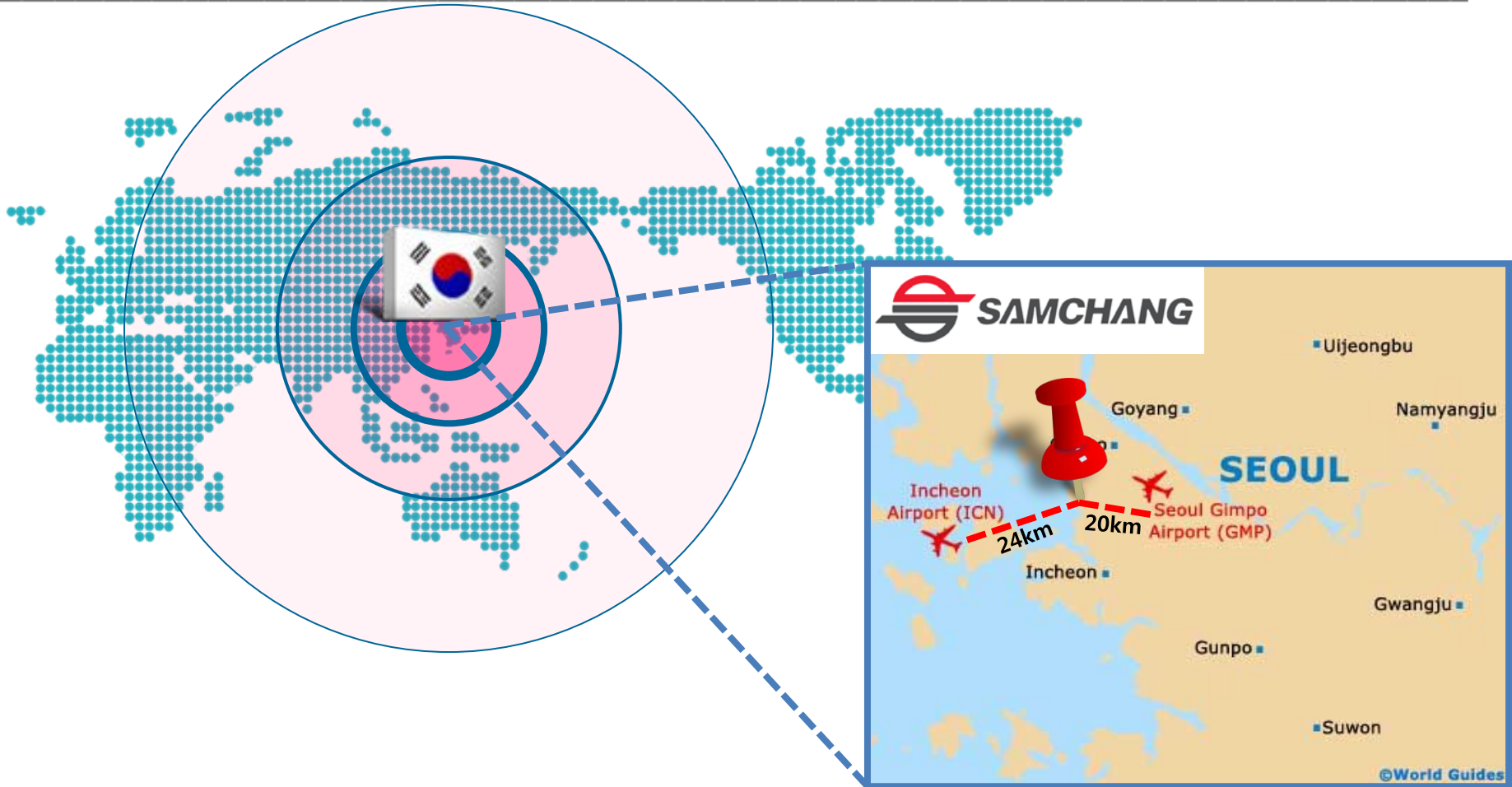
**7 CERTIFICATES**

**8 US BUSINESS PARTNERS**

**9 MAJOR CUSTOMERS**

**10 CONCLUSION**

# COMPANY LOCATION



Address : (22744) 4, Saryeom-ro 32beon-gil, Seo-gu, **INCHEON, KOREA**

🚗 20 minutes from Incheon International Airport(ICN) by Car

Tel. : +82-(32)-561-7752 / e-mail : [latemz@hotmail.com](mailto:latemz@hotmail.com)

# COMPANY HISTORY



1967~

**1967 Established as  
Sam Chang Foundry**

1977 Established as  
Sam Chang Foundry Co., Ltd.

1987 Moved from Seoul to Incheon

**1987 Approved by UL, ULC and FM  
for Butterfly Valves  
(The FIRST COMPANY in ASIA)**

1995 Approved by UL, ULC and FM  
for Gate Valves

1995 Installed Electric Furnace (2.5ton)

**1995 Open US Subsidiary (Global Safety Products, Inc.)**

1999 ISO9001 Certified

1999 Awarded One MUSD Exportation Prize

1990s

2000s

2003 Installed Electric Furnace (2.0ton x 2)

2003 Certified ISO9001:2000

2005 Certified QS9000:1998

2005 Installed DISA Molding Machine (2013MKIII)

**2007 Certified ISO/TS16949:2002**

2008 Replaced AMF Horizontal Automatic Molding Machine to AMF-IV

2010s

**2012 Established R&D Center**

2015 Approved by UL, ULC and  
FM for Swing Check Valves

2015 Awarded Five (5) MUSD  
Exportation Prize

**2016 Approved by API  
for Flowline Products**

2016 Approved by GOST, EAC for  
Butterfly Valve

2016 Launched New Gate Valves

**2016 Small Giants Company  
approved by Ministry of  
Trade, Industry and Energy  
of Korea**

# BUSINESS PORTFOLIO

## CASTING

- Automobile Parts
- Heavy Equipment Parts
- Railroad Car Parts
- Agricultural Machinery Parts
- Various Industrial Goods



## FIRE SAFETY

- Butterfly Valve (Grooved/Wafer)
- Butterfly Valve (Brass) (Grooved/Threaded)
- Swing Check Valve
- Shotgun Valve
- Gate Valve (NRS/OS&Y)
- (Alarm Valve / Riser)
- Coupling
- Flexible Drop & Fittings

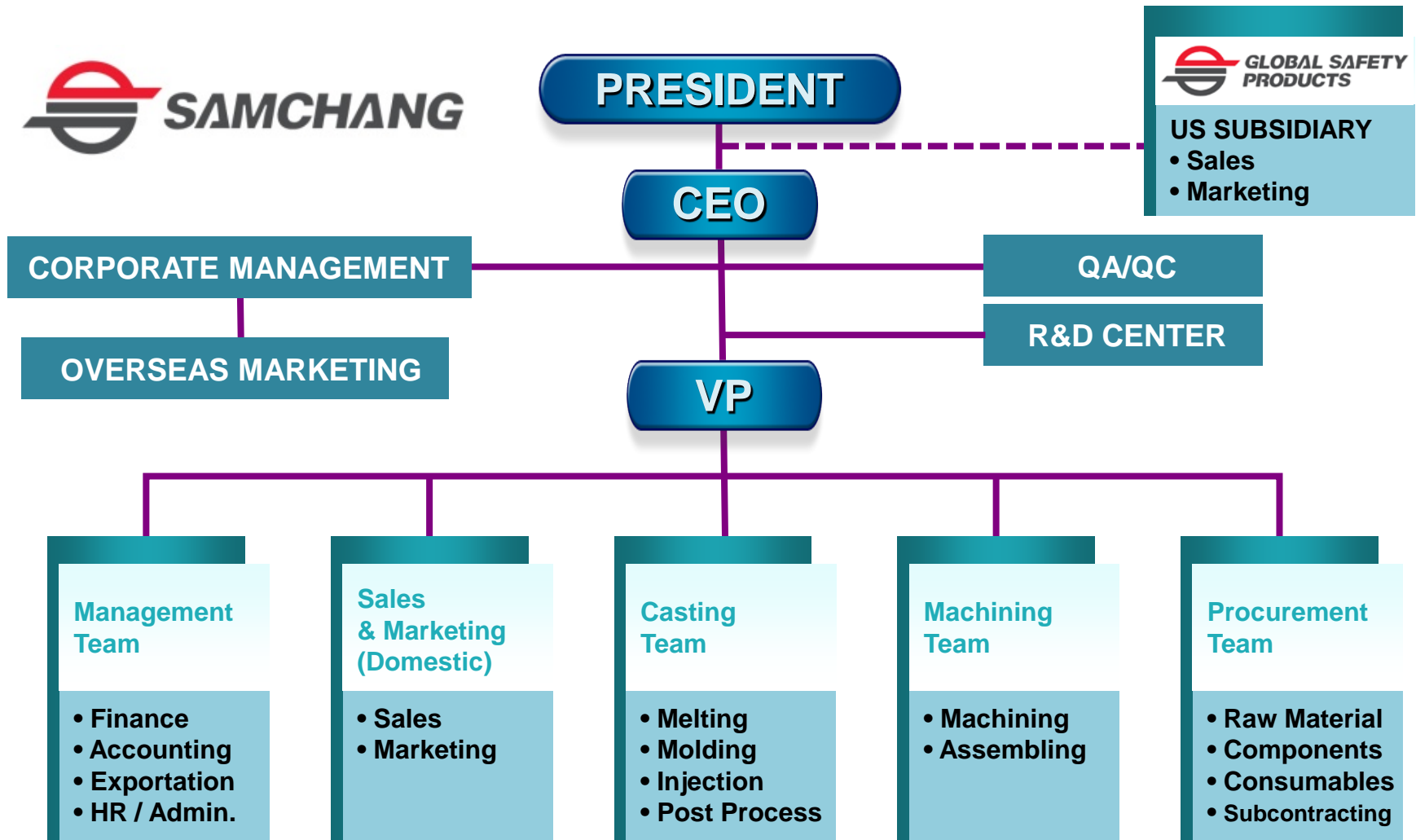


## OIL/GAS FLOWLINE

- Plug Valve
- (Choke Valve)
- Swivel Joint
- Pup Joint
- Hammer Union
- (Integral Fittings)
- Sucker Rod Couplings
- Tubing Clamp
- Pumping Flow Tee
- Tilting Check Valve

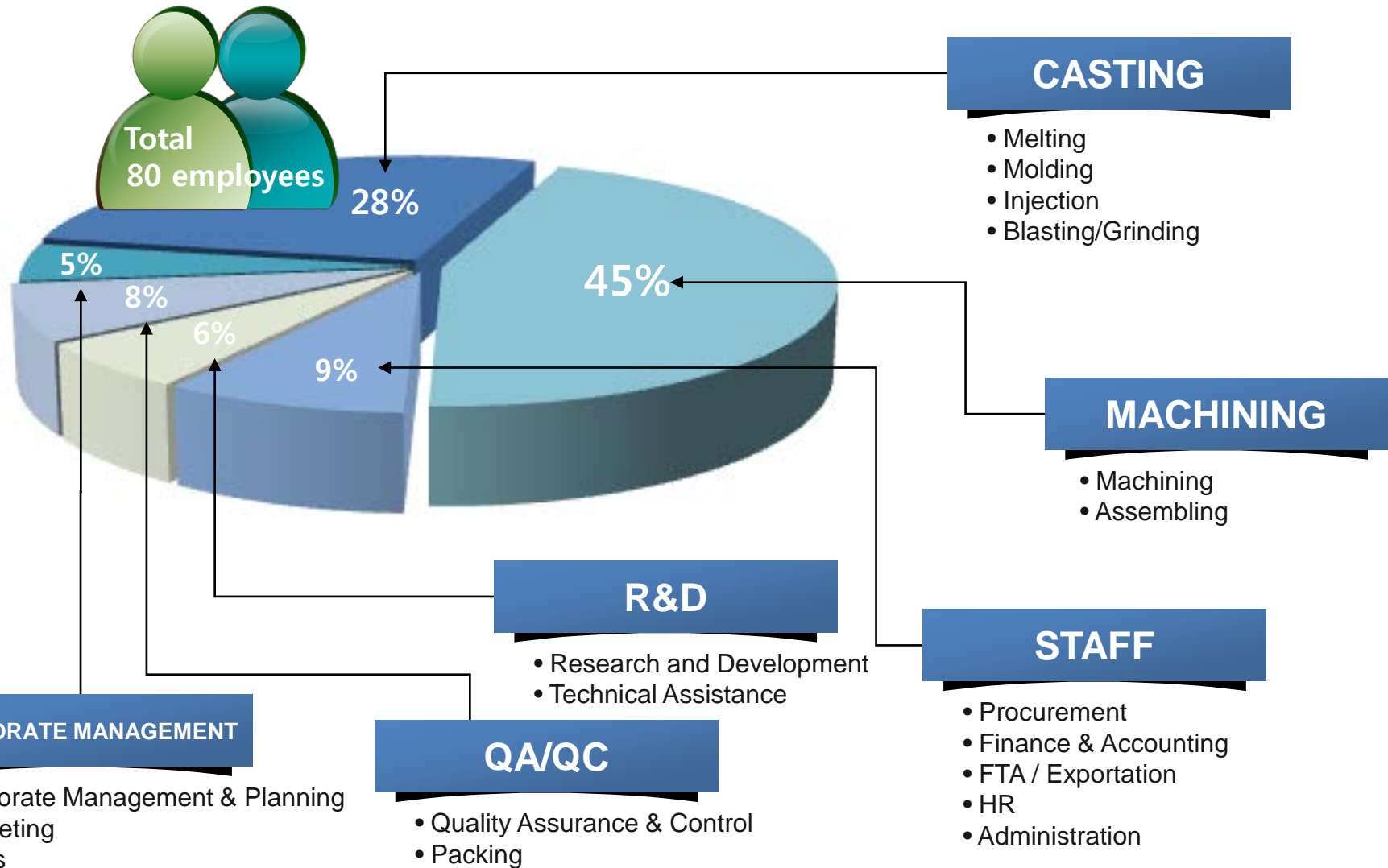


# ORGANIZATION STRUCTURE



※ VP : Vice President

# MANPOWER STATUS





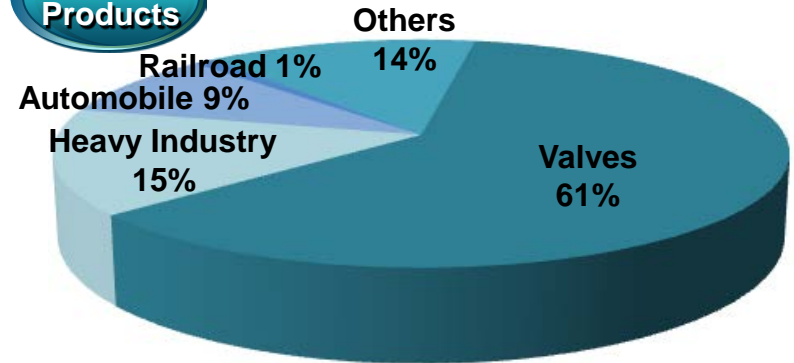
# BUSINESS STATUS

## Sales

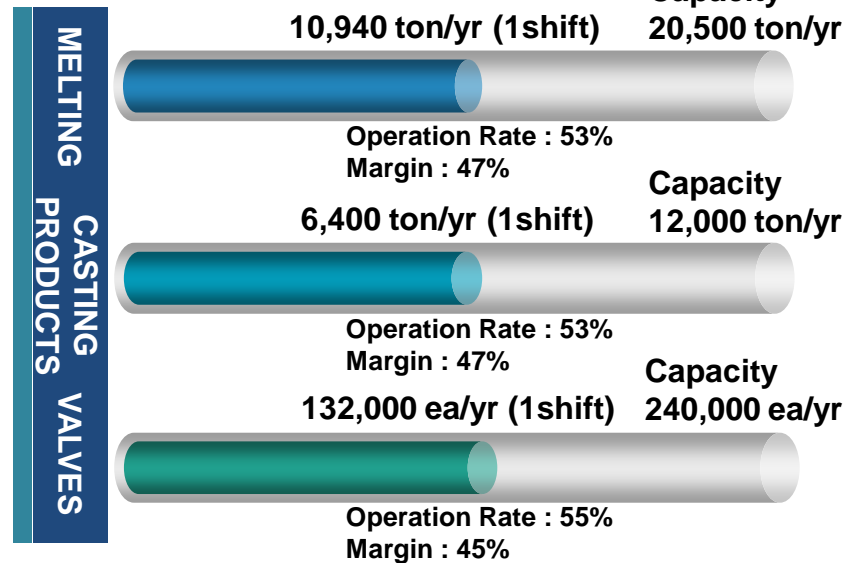
EXPORT  
DOMESTIC



## Share by Products



## Production Capacity





# FACILITIES & EQUIPMENT (CASTING)

## Melting

- Melting Furnace
  - 2.5 ton 1 Source 1 Body (Inductotherm, USA)
  - 2.0 ton 1 Source 2 Bodies (AMM, UK)



## Molding

- Automatic Molding Line
  - AMF IV-06R Horizontal 610x508x400, 160 mold/hr (Tokyu, JPN)
  - DISA 2013MK-3 Vertical 600x480x330, 360 mold/hr (DISA, DEN)

## Blasting

- Shot Blast M/C
  - Apron Type M/C 1.2 ton, 30 min/piece (Sekwang-shot, KOR)
  - Drum Type M/C 1.5 ton, 30 min/piece (Sekwang Engineering, KOR)

## Post Process

- Trimming Press M/C
  - 60 ton x 1 set (KIA Machinery, KOR)
- Bench Grinder
  - Two Heads Grinding  $\Phi 650$ ,  $\Phi 405$  (Tae Sung, KOR)

- Sand Preparation
  - 1.5 ton/batch, 40 ton/hr (B&P, USA)

## Sand Preparation



# FACILITIES & EQUIPMENT (MACHINING)

## CNC

- V-850 (Doosan, KOR)
- ECO 5V R (Hwacheon, KOR)
- HI-ECO 31A (Hwacheon, KOR)
- PUMA 12L (Doosan, KOR)
- PUMA 240 (Doosan, KOR)
- DC-3000 (Daegu, KOR)

## MCT

- HC500 (Horizontal) (Daewoo, KOR)
- KH50G (Horizontal) (Hyundai, KOR)
- PCV-50 (Vertical) (Samsung, KOR)
- LCV50 (Vertical) (Samsung, KOR)

## DRILLING

- NBTG 540 (Nambuk, KOR)
- NBTG 540 (Nambuk, KOR)
- DRD-1000 (Doosan, KOR)

## MILLING

- HF NO2 (ENSHU, JPN)
- DMB U54 (Doosan, KOR)
- HMTH-1300N (Hwacheon, KOR)

## LATHE

- DML (850 x 1500) (Daewoo, KOR)
- DL850-1500G (Daewoo, KOR)
- NSL (480 x 1000G) (Hwacheon, KOR)
- DL (580 x 1500G) (Daewoo, KOR)

## CUSTOM MADE

- BFV BODY HOLE (Samwoo, KOR)
- BFV DISC HOLE (Samwoo, KOR)



# FACILITIES & EQUIPMENT (QA/QC)

## QA/QC

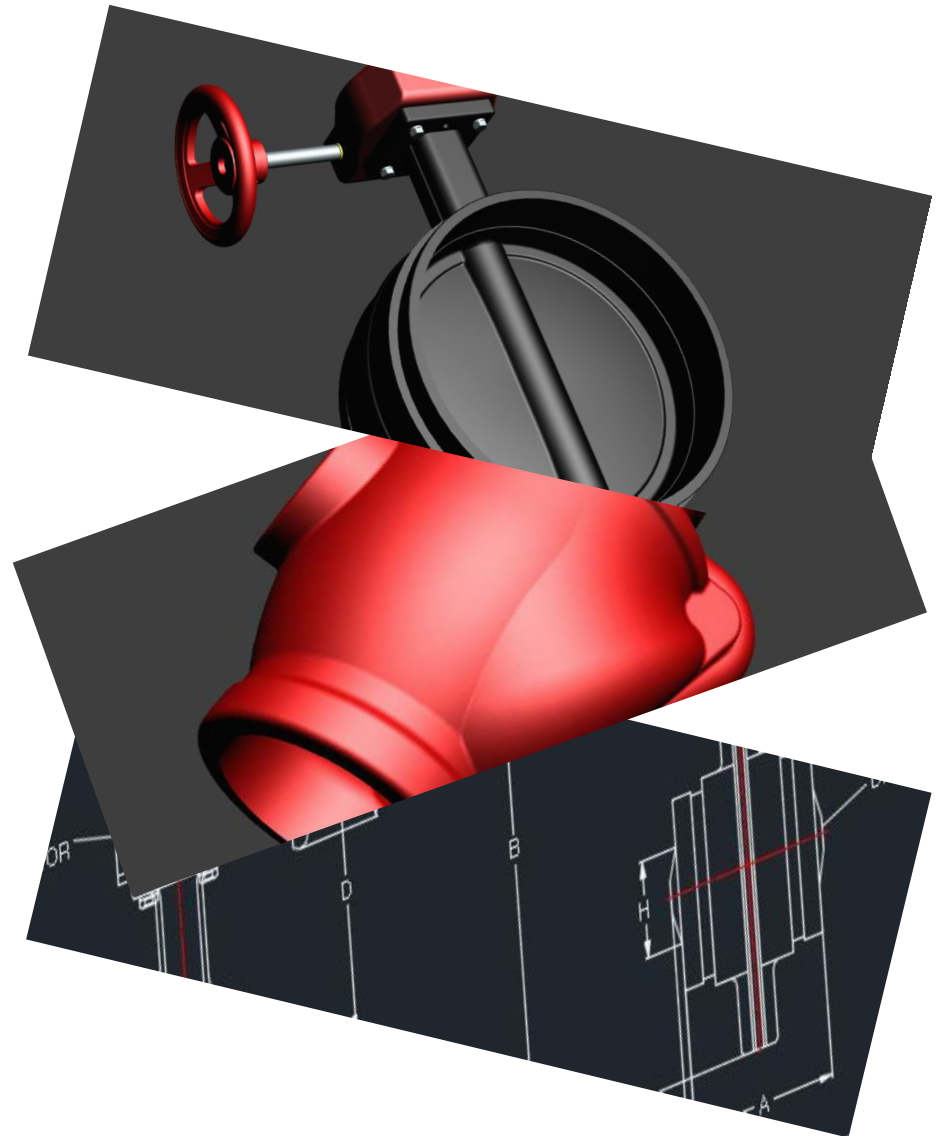
- Universal Testing Machine, 30 ton (Kyeongdo mfg. Ltd., KOR)
- Brinell Hardness Testing Machine
  - DTB-500 (Daekyung Tech, KOR)
- Metallurgical Microscope
  - XJP-6A (COIC, ITA)
- Spectrometer
  - SPECTRO MAXx (AMETEK, GER)
- CE Meter
  - 255ICS (Nisabu, JPN)
- Ultrasonic Inspection Meter
  - USM 35DAC (Krautkramer, GER)
- Ultrasonic Thickness Gauge
  - CL5 (Krautkramer, GER)
- Sand Testing (SIMPSON, USA)
  - Electronic Laboratory Shifter
  - Sand Rammer
  - Digital Permeability Meter
  - Moisture Analyzer
  - Electronic Universal Sand Strength Machine
- Rubber Hardness Tester
  - GS-706N (Teclock, JPN)
- Coating Thickness Gauge
  - TM510FN (TMTeck, CHN)
- Leak Tester 2,500 Bar (ENPOS, KOR)
- Leak Tester 100 Bar (Custom Made, KOR)







- Established in 2012
- Purposes
  - R&D for high valued product
  - Research on fundamental/application technology for material
  - Research on fundamental/application technology for manufacturing
  - Support total solution for fire safety
- Technical Fields
  - Casting (Gray Iron, Ductile Iron)
  - Valves (Butterfly, Check, Gate, Plug, Choke etc.)
  - Fittings, Couplings, Flexible Drop etc.
  - Oilfield / Shale Gas Flowline Products & Oil Tools
- Role & Responsibility
  - New product development
  - Conduct National Tech. Development Project
  - Project for International Standard Approval
  - Technical support for manufacturing
  - Complement existing products
  - Supervision for Subcontractors



# CERTIFICATES



UL / cUL / ULC



FM



CE



VdS (Mfg' Plant)



CA State Fire Marshall



Russian GOST



EAC



API 6A / API 16C



KS



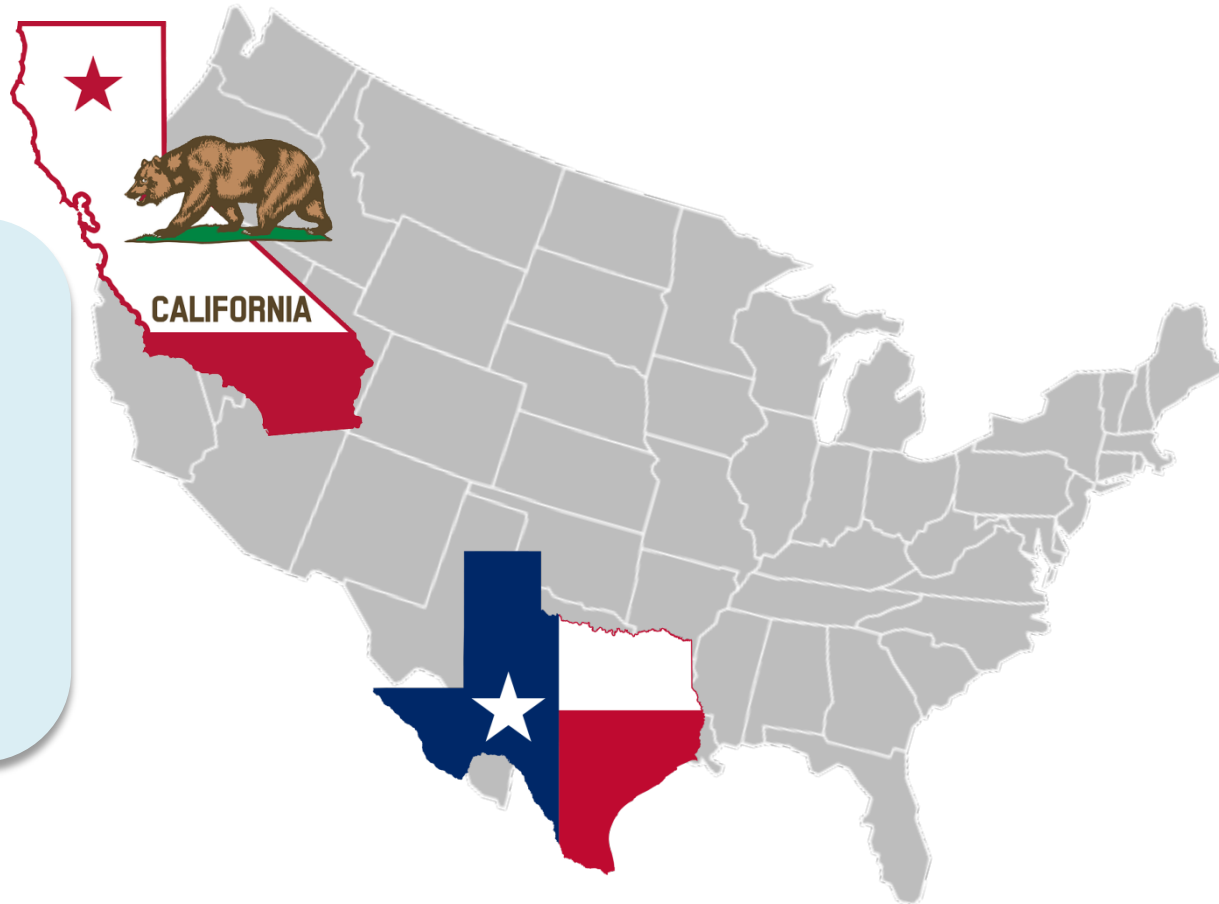
ISO 9001:2008  
ISO/TS 16949

# US BUSINESS PARTNERS



**GLOBAL SAFETY  
PRODUCTS**

- US Subsidiary  
(Established in 1995)
- Address  
970 E. Orangethorpe Ave. Unit B,  
Anaheim, CA 92801, USA
- Handling Products
  - Fire Safety Butterfly Valves
  - Fire Safety Swing Check Valves
  - Fire Safety Gate Valves
  - Flexible Drop & Fittings
  - Heavy Industrial Casting Products
















• Advancing the establishment

• Address  
Texas, USA

• Handling Products  
- Oil Tools & Flowline Products

# MAJOR CUSTOMERS (CASTING PRODUCTS)

CUSTOMER	PRODUCT	MATERIAL	SHARE	END USER
HANYEONG METAL IND.	KNUCKLE CARRIER	FCD 600	12%	
JINHEUNG FOUNDRY	BEARING CAP HUB ADAPTER	FCD 450 FC 250	11%	 
SHINAN CAST IRON	KP BOLT & NUT	FCD 450	10%	
DAWOO SEALANT	FLOOR HINGE	FC 200	7%	
HANKUK MACHINERY	G2 2.4L FLY WHEEL PULLEY	FC 250	7%	 
SUNGBO P&T	CARRIER COVER	FCD 600	6%	
TAEMYUNG INDUSTRIAL	SEGMENT BOLT BOX	FCD 500	5%	
MAGNA KOREA	BLOCK HOUSING	FC 250	5%	
KOREA RAILROAD	BREAK DISC ADAPTER	FC 250 FCD 500	5%	
JINHEUNG FOUNDRY	ARM INTERMEDIATE SINGLE PULLEY	FCD 450 FC 250	5%	
KUDAN	BASE CAM COTTON PICKER	FCD 600	3%	



# MAJOR CUSTOMERS (VALVES)



## < EPC Reference >

Project	Location	Owner	Contractor	Year
Jurong Rock Caverns Phase I	Singapore	JTC	Hyundai E&C	2016

# WHY SAMCHANG AS YOUR GROWTH PARTNER

*Mutually Beneficial* between us and Clients

**Escalated Reputation  
&  
Repeated Orders**

**Ample  
Qualified  
Engineers**

**Accumulated  
Know-how**

**Highest  
Quality  
Standard**

**Schedule  
Reduction**



Your Growth Partner

Thank You !