

# STARFIX

Absolute comfort & Quick treatment

## Ready-made Splint

Starfix is a ready-made Splint, an orthopedic medical device based on environment-friendly biodegradable polymer (PLA) made by 100% domestic technology as the main product brand of Yun Biotech.

**Comfort to patients!**  
**Convenience to doctors!**



## Starfix Features



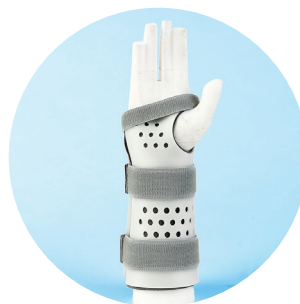
- 1 It is made of environmentally friendly biodegradable material made of 100% domestic technology.
- 2 It is pre-mold type and it is molded according to the wear part, so it is easy to treat and quick treatment is possible.
- 3 Remolding is possible, and appropriate treatments are possible depending on the degree of deformation and the condition of the affected part of the same patient.
- 4 It is lightweight and excellent in strength compared to conventional thermosetting resin.
- 5 Using air mesh and Velcro strap band, it has excellent ventilation and easy to attach and detach.
- 6 X-ray transmission is possible, so you can shoot while wearing the product.

## Short Arm

### Short Arm Size Guide

Measure hand width at finger MP joints

Size	Cm	Inch
S	15~17	6~6.5
M	18~20	7~8
L	21+	8+



#### Thumb Spica

SFSATS12 (L-S)	SFSATS11 (R-S)
SFSATS22 (L-M)	SFSATS21 (R-M)
SFSATS32 (L-L)	SFSATS31 (R-L)

#### Short Arm (Cast type)

SFSACT12 (L-S)	SFSACT11 (R-S)
SFSACT22 (L-M)	SFSACT21 (R-M)
SFSACT32 (L-L)	SFSACT31 (R-L)



#### Ulnar Gutter

SFSARG12 (L-S)	SFSARG11 (R-S)
SFSARG22 (L-M)	SFSARG21 (R-M)
SFSARG32 (L-L)	SFSARG31 (R-L)

#### Radial Gutter

SFSARG12 (L-S)	SFSARG11 (R-S)
SFSARG22 (L-M)	SFSARG21 (R-M)
SFSARG32 (L-L)	SFSARG31 (R-L)



#### Cock-up

SFSACU12 (L-S)	SFSACU11 (R-S)
SFSACU22 (L-M)	SFSACU21 (R-M)
SFSACU32 (L-L)	SFSACU31 (R-L)

#### Short Arm Long (Functional)

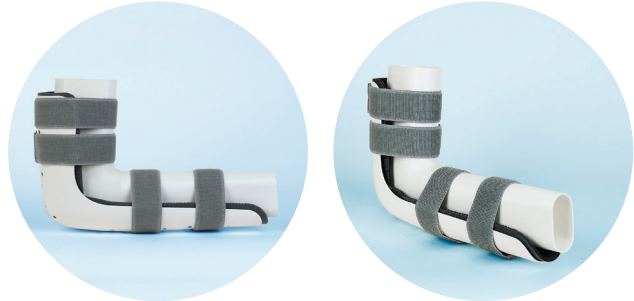
SFSASA12 (L-S)	SFSASA11 (R-S)
SFSASA22 (L-M)	SFSASA21 (R-M)
SFSASA32 (L-L)	SFSASA31 (R-L)

## Long Arm

### Long Arm Size Guide

Measure arm width at humerus, forearm (mid) & length at arm (axillary region to MP joint of hand)

Size	Cm	Inch
M	Width : 20~30	8~12
	Length : ~52	~20
L	Width : 30+	12+
	Length : 52~	20~



### Long Arm

SFLAXX20 (M)

SFLAXX30 (L)

## Short Leg

### Short Leg Size Guide

Shoe Size

Size	Cm	Inch
S	19~21.5	7.5~8.5
M	22~26.5	8.5~10.5
L	27+	10.5+



### Short Leg

SFSLXX10 (S)

SFSLXX20 (M)

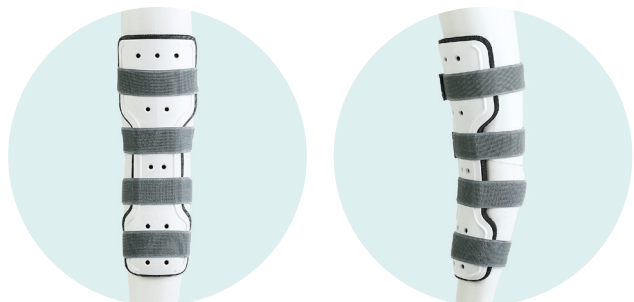
SFSLXX30 (L)

## Long Leg

### Long Leg Size Guide

Measure leg width at thigh, calf (mid) & length at leg (inguinal region to malleolar bone)

Size	Cm	Inch
M	Width(thigh): 38~50	15~20
	Width (calf): 28~40	11~16
	Length: ~60	~24
L	Width(thigh): 50+	20+
	Width(calf): 40+	16+
	Length: 60+	24+



### Cylinder

SFLLC20 (M)

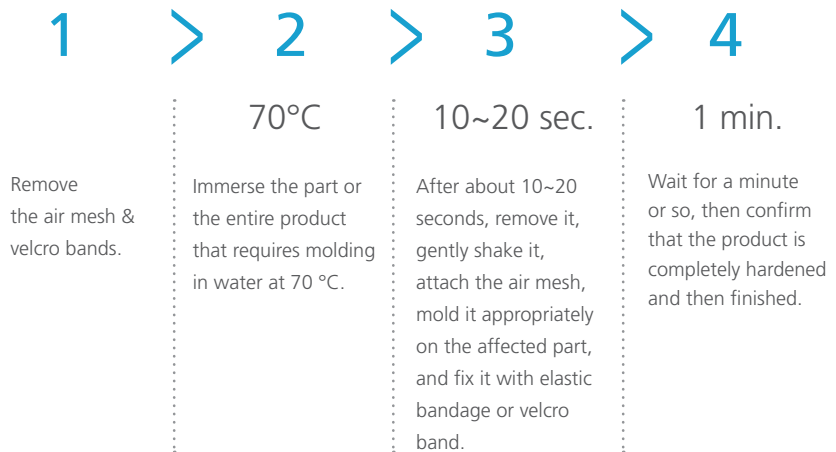
SFLLC30 (L)

## How to use

1. Check the affected part.
2. Select the product that matches the affected part.
3. Place the product on the affected park and fix it with the Velcro bands.

## How to adjust

When the product does not fit the lesion due to size or swelling



## Precautions

1. It must be used under the guidance of a specialist.
2. Caution should be exercised because severe deformation of the product may cause changes in the function of this product.
3. Do not exert excessive heat or force on the product.
4. Be careful when using swelling in the affected area and do not reuse a product for multiple patients.

**YUN**biotech

**Yun Biotech, Co.**

#E-401, 38, Namdongseo-ro 53 beon-gil,  
Namdong-gu, Incheon, Republic of Korea

Tel: +82-32-816-0915

Fax: +82-32-816-0916

Email: [yunbiotech@daum.net](mailto:yunbiotech@daum.net)

[www.yunbiotech.com](http://www.yunbiotech.com)